

State of Wyoming Corner Record

(In compliance with the CORNER PERPETUATION AND FILING ACT, Wyoming Statutes, 2013 Section 33-29-901 through 33-29-910, and the Rules and Regulations of the Board of Professional Engineers and Professional Land Surveyors)

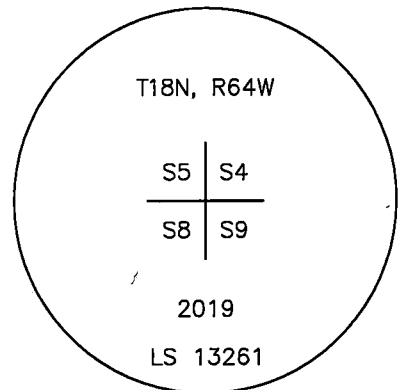
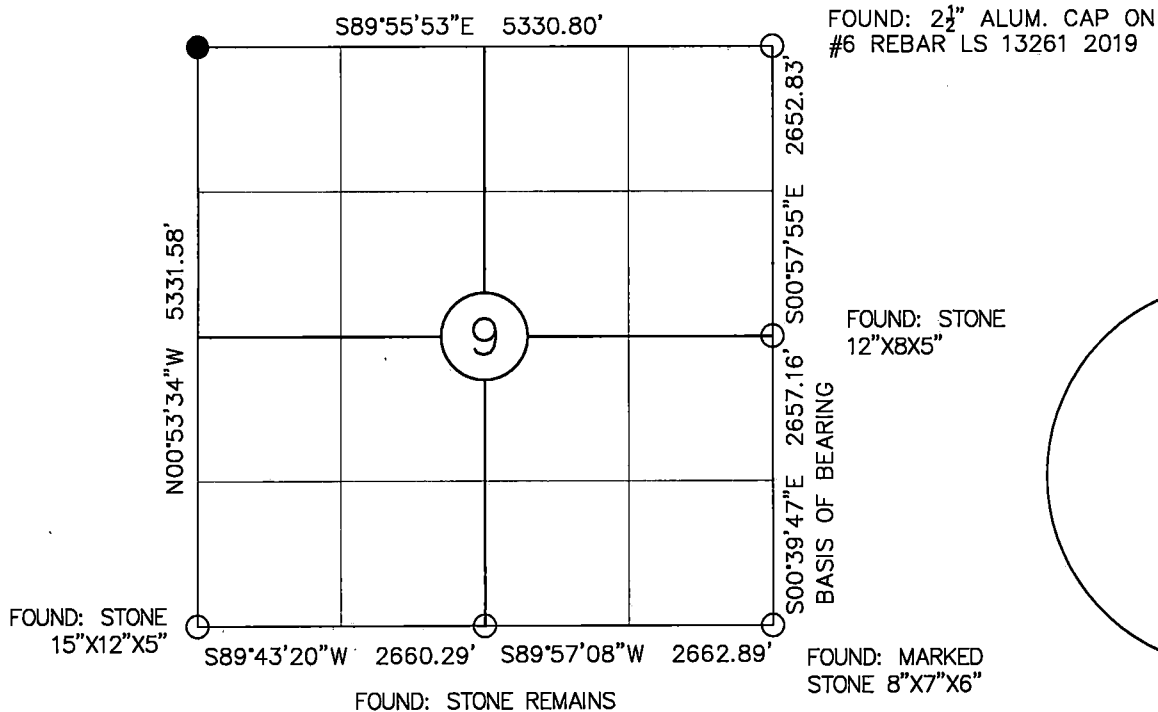
Reverse side of this form may be used if more space is needed.

Record of original survey and citation of source of historical information (if corner is lost or obliterated). Description of corner monumentation evidence found and/or monument and accessories established to perpetuate the location of this corner. Sketch of relative location of monument, accessories, and reference points with course and distance to adjacent corner(s) (if determined in this survey). Method and rationale for reestablishment of lost or obliterated corner. N/A

ORIGINAL GLO RECORD: Sandstone 24"x12"x3"
 MONUMENT FOUND: #4 Rebar near T-Post set flush to ground.
 MONUMENT SET: 2½" Aluminum Cap on a #6 Rebar ten (10) inches above ground, stacked stones around monument for corner common to Sections 4, 5, 8 and 9.

All dimensions are in US Survey Feet

Monument location



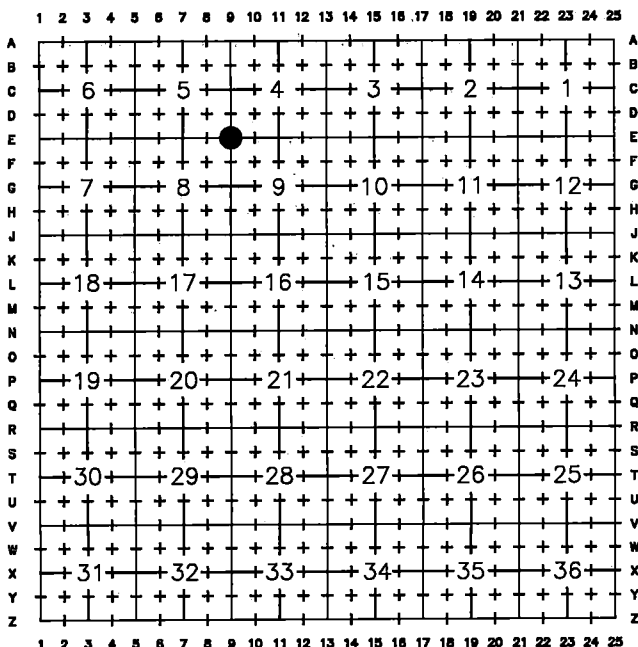
Monument Inscription

Date of Field Work: 9/26/2019

Office Reference: 1903-005 #4754

See Reverse Side for References

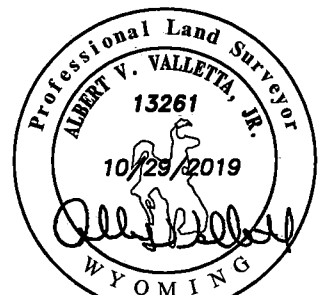
Cross Index Plat



Firm/Agency, Address
 DALEY LAND SURVEYING, INC.
 17011 LINCOLN AVE., #361
 PARKER, CO 80134
 (303) 953-9841

This corner record was prepared by me or under my direction and supervision.

SEAL & SIGNATURE



FOR AND ON BEHALF OF
 DALEY LAND SURVEYING INC.,
 ALBERT V. VALLETTA, JR., PLS 13261

RECP #: 765655
 RECORDED 11/13/2019 AT 9:38 AM BK# 2647 PG# 131
 Debra K. Lee, CLERK OF LARAMIE COUNTY, WY PAGE 1 OF 2

Corner Name Northwest Corner Section 9, T 18 N, R 64 W, 6th P.M.

Cross-Index No.: E-9

County: LARAMIE

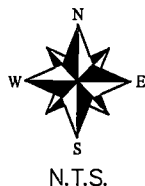
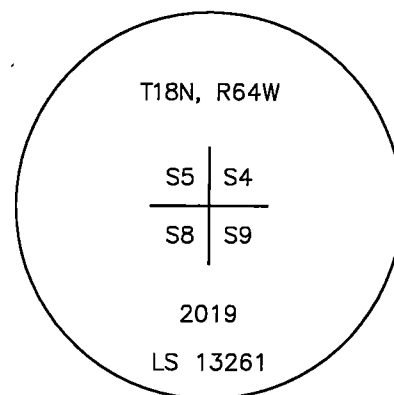
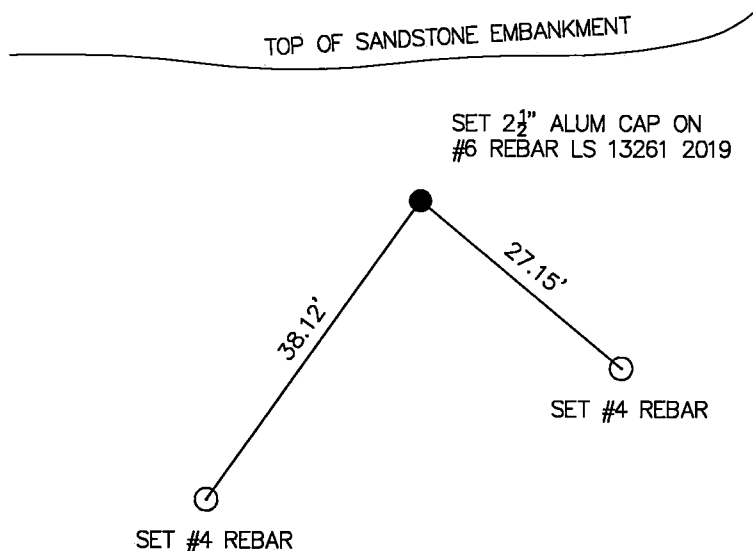
State of Wyoming Corner Record

(In compliance with the CORNER PERPETUATION AND FILING ACT, Wyoming Statutes, 2013 Section 33-29-901 through 33-29-910, and the Rules and Regulations of the Board of Professional Engineers and Professional Land Surveyors)

Reverse side of this form may be used if more space is needed.

Record of original survey and citation of source of historical information (if corner is lost or obliterated). Description of corner monumentation evidence found and/or monument and accessories established to perpetuate the location of this corner. Sketch of relative location of monument, accessories, and reference points with course and distance to adjacent corner(s) (if determined in this survey). Method and rationale for reestablishment of lost or obliterated corner. N/A

ORIGINAL GLO RECORD: Sandstone 24"x12"x3"
 MONUMENT FOUND: #4 Rebar near T-Post set flush to ground.
 MONUMENT SET: 2½" Aluminum Cap on a #6 Rebar ten (10) inches above ground, stacked stones around monument for corner common to Sections 4, 5, 8 and 9.
 REFERENCES: Set #4 Rebar References as shown below.
 All dimensions are in US Survey Feet



Monument Inscription

Date of Field Work: 9/26/2019

Office Reference: 1903-005 #4754

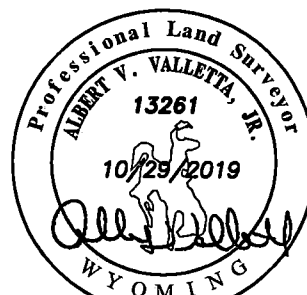
Cross Index Plat

	1	2	3	4	5	6	7	8	9	10	11	12	13	14	15	16	17	18	19	20	21	22	23	24	25		
A																											B
B	+	+	+	+	+	+	+	+	+	+	+	+	+	+	+	+	+	+	+	+	+	+	+	+	+	+	C
C		6																									D
D	+	+	+	+	+	+	+	+	+	+	+	+	+	+	+	+	+	+	+	+	+	+	+	+	+	+	E
E																											F
F	+	+	+	+	+	+	+	+	+	+	+	+	+	+	+	+	+	+	+	+	+	+	+	+	+	+	G
G																											H
H	+	+	+	+	+	+	+	+	+	+	+	+	+	+	+	+	+	+	+	+	+	+	+	+	+	+	J
J																											K
K	+	+	+	+	+	+	+	+	+	+	+	+	+	+	+	+	+	+	+	+	+	+	+	+	+	+	L
L																											M
M	+	+	+	+	+	+	+	+	+	+	+	+	+	+	+	+	+	+	+	+	+	+	+	+	+	+	N
N																											O
O	+	+	+	+	+	+	+	+	+	+	+	+	+	+	+	+	+	+	+	+	+	+	+	+	+	+	P
P																											Q
Q	+	+	+	+	+	+	+	+	+	+	+	+	+	+	+	+	+	+	+	+	+	+	+	+	+	+	R
R																											S
S	+	+	+	+	+	+	+	+	+	+	+	+	+	+	+	+	+	+	+	+	+	+	+	+	+	+	T
T																											U
U	+	+	+	+	+	+	+	+	+	+	+	+	+	+	+	+	+	+	+	+	+	+	+	+	+	+	V
V																											W
W	+	+	+	+	+	+	+	+	+	+	+	+	+	+	+	+	+	+	+	+	+	+	+	+	+	+	X
X																											Y
Y	+	+	+	+	+	+	+	+	+	+	+	+	+	+	+	+	+	+	+	+	+	+	+	+	+	+	Z
Z																											

Firm/Agency, Address
 DALEY LAND SURVEYING, INC.
 17011 LINCOLN AVE., #361
 PARKER, CO 80134
 (303) 953-9841

This corner record was prepared by me or under my direction and supervision.

SEAL & SIGNATURE



FOR AND ON BEHALF OF
 DALEY LAND SURVEYING INC.,
 ALBERT V. VALLETTA, JR., PLS 13261



RECP #: 765655
 RECORDED 11/13/2019 AT 9:38 AM BK# 2647 PG# 132
 Debra K. Lee, CLERK OF LARAMIE COUNTY, WY PAGE 2 OF 2

Corner Name Northwest Corner Section 9, T 18 N, R 64 W, 6th P.M.

Cross-Index No.: E-9

County: LARAMIE